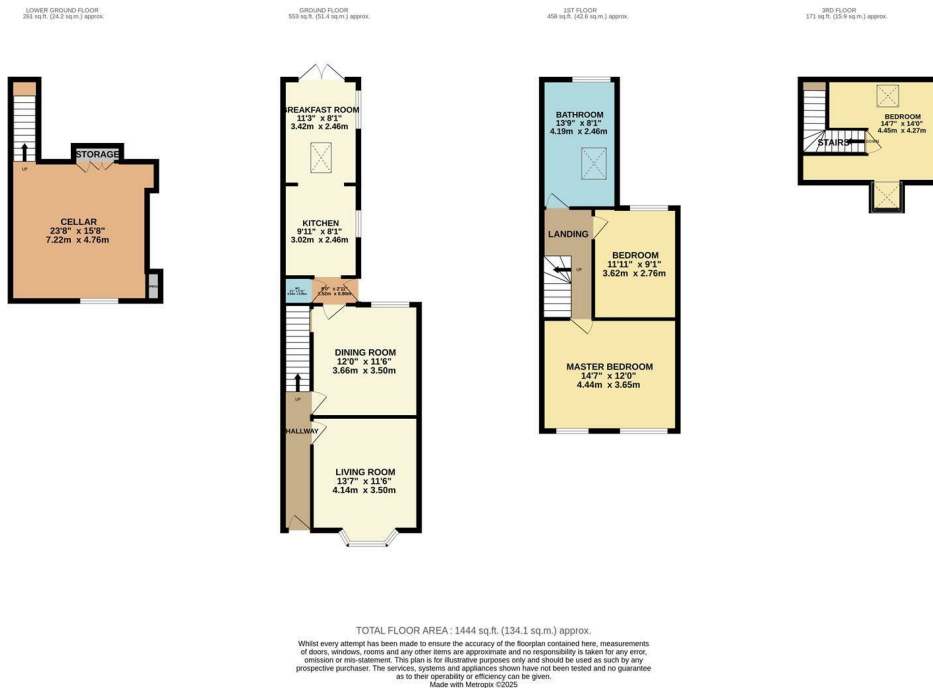


50 New Street, Leamington Spa  
£465,000

charlesrose.



Situated in the heart of Leamington Spa, this charming Victorian terrace beautifully blends period character with stylish, modern living. The ground floor features a bay-fronted lounge with original floorboards and open fire, a separate dining room, and an extended kitchen/breakfast room with French doors opening onto a south-facing courtyard garden. A W.C. and useful cellar room complete the lower levels. Upstairs, the first floor offers two double bedrooms and a spacious bathroom with twin sinks and a separate shower. A further bedroom is located on the second floor. Characterful and thoughtfully presented throughout, this is a superb home in a prime central location.

charlesrose.

- 01926 832411
- hello@charlesrose.co.uk
- charlesrose.co.uk



